

BFES/SCEA Association Email Bulletin

September 2023



From: Membership Secretary
Email: bfes.scememb@gmail.com

First thoughts:

A very quick reminder that the Lunch event at the RAF Club in London and the Annual General Meeting will take place on Friday 22nd September. If you are going to this event, we hope that you enjoy all that is on offer. If you are unable to go, there is still time to send any queries / issues for discussion at the AGM part of the day to Lynn Marshall, the Association's Secretary.

General paperwork for the AGM, including the Annual Report, will be published on the website, so you will be able to download information about the Association and the AGM.



R is for Rheindahlen - thanks to a tip from Facebook!



Fred Williams alerted Facebook readers to the old Rheindahlen Bulletins that were stored on their website. Although these are general in content, rather than being education specific, they make interesting reading about the garrison and JHQ. The Bulletins that have been digitalised date between 1967 and 2013, when the garrison closed. If you were there during this time period you might fancy a trip down memory lane and read some of the publications. Here is the link:

<https://jhq-rheindahlen.de/documents/jhq-documents/rheindahlen-bulletin/>

As well as the old Bulletins, in the JHQ Rheindahlen website's 'history' section there are items on the schools in Rheindahlen and also a wide range of old photographs...

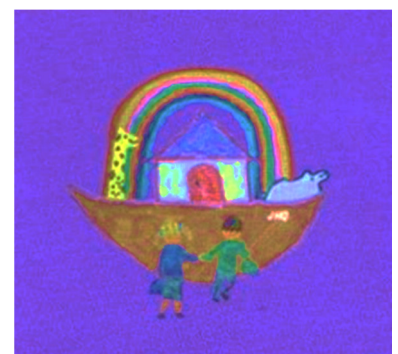
The last commemorative edition of the Rheindahlen Bulletin from 2013 contained items related to Windsor School and Ark School.

Here are some extracts from the 2013 publication:

"Ark School" by Mike Chislett

Ark School opened in 2010 and has served the children of JHQ during the final three years of the camp.

Since St George's closure in 2011, Ark has been the only primary school here. Ark was created from the facilities of St Andrews and St Patricks, which meant we were blessed with some of the best school grounds and equipment in BFG as well as a lot of useful internal space. We have two halls, for example, as well as rooms for art, music, extended day care and so on.



The school inherited talented staff from its founder primary schools, as well as experienced early-years workers from Stepping Stones and Ladybirds. The name 'Ark' caused a little discussion at first, but we had wanted something that could incorporate aspects of the previous schools' identities and could serve as a metaphor for a vibrant and creative environment, while JHQ was pared away around us.

The school has been blessed with delightful children and supportive families, in a garrison context of encouragement and problem-solving. The three years has seen the school roll range from over 250 (through 2010 and 2011) to 136 in summer 2013. However, over 500 children have attended Ark School at some time or other during its three year life."



Ark School staff in 2013 with Mike Chislett in the front row!



Windsor School, Rheindahlen:

"Although the new Windsor School opened in September 1987 both sites were retained with Years 7, 8 and 9 on the Queens's site and Years 10, 11, and Sixth Form on the Kent site. Many staff and students had to travel in order to meet their timetable requirements. Windsor School remains in the same grounds and building as the former Queen's School but has received upgrades to its build, such as an expansion of its West wing.

Options for Change (1991-1995) resulted in a reduction of Service personnel in BFG from 66,000 to 29,000, reducing the pupil population to approximately 10,000 of whom 80% were primary.

In January 1993, after lengthy consultation, "Schools for Future 2" was published, providing four secondary schools to cater for BFG, Gloucester, King's, PRS and Windsor. The reduction in secondary provision and the closure of schools in Berlin, Dortmund and Munster resulted in significant changes of staffing throughout the remaining secondary schools.

At its height Windsor School catered for over 1100 students from military and MOD civilian personnel. However, due to reductions in the British Army of the Rhine and related military drawdowns since, Windsor now caters for an average of 550 students. Students are a mix of daily pupils from the JHQ garrison, pupils are bussed in from nearby MOD garrisons and weekly and termly boarders from AFNORTH, SHAPE, Ramstein plus a number of ISODETS (*supporting children's education in isolated detachment areas*) being accommodated within the boarding houses.



Initially there were three houses – Windsor, School and Chatham; Chatham House closed its doors to boarders in July 2006 due to falling rolls. The Chatham building was handed back to RSU in 2007.

In 1992 West Block was completed, adding two floors of classrooms and a Sixth Form Centre. It also became the highest part of the school. As a result of this build Kent School site at Hostert closed and was handed back to the German authorities in 1993. The new building was opened by HRH The Duchess of Gloucester, Colonel-in-Chief RAMC on 25th March 1992.



HRH The Princess Royal included a visit to Windsor School on 19th September 2006 as part of her JHQ programme. Whilst in the school she watched a group of sixth form students, under the direction of Head of Drama, John Grant, perform a thought provoking play based on the impact of deployment on families and met representatives of the Afghan Appeal.

Windsor School achieved a Silver Artsmark Award in May 2008 in recognition of the provision and opportunities available throughout the arts at the school. As a result of this increased focus on the arts a number of students were introduced to the Arts Awards Scheme. It developed rapidly in school with many successes, including one teacher who received SCE’s first Gold Award.

Windsor School achieved the Healthy Schools Award and the Green Flag Eco Award in July 2009. Staff and students were involved in both awards. The healthy dimension of the school was praised in the assessors report for the way in which health is very much part of the ethos of the school. “



Looking Forward ... Connections



Also in the Rheindahlen 2013 Bulletin is an article by Judith Wake detailing the construction of a Sculpture made at Ark School to commemorate the impending closure of the school. The artist, blacksmith Melissa Cole, parents and pupils came up with the concept of a British post box with metal wands with a bird attached the end of these – representing the pupils’ migration, with the chance of some of the children re-gathering in another destination.

Reading this article made a connection to the future, as the post box is now sited at the National Memorial Arboretum, which is most likely to be the venue for the 2024 Lunch and AGM! So, look out for the date in later issues of **our** Bulletin and be ready to “save the date” in your diary to see the post box in situ next year!



Teachers, Ian Rowles and Sue Chislett with younger pupils making wire birds.



Melissa Cole moulding copper



Carefully crafted metal birds

This month's Quiz:

We seem to have been 'land-locked' with the quiz offerings so far, so this quiz is based upon the sea, with questions from fact and fiction! Answers, next month!

1. Jules Verne wrote about Captain Nemo's adventures in two novels – one was "20,000 leagues under the sea" (1870), but what was the title of his other book?
2. Admiral Horatio Nelson, when in action in 1801 at the Battle of Copenhagen, put a telescope to his blind eye and supposedly said...what?
3. Richard Wagner wrote an opera premiered in 1843 about a doomed sea captain cursed to roam the seas forever unless he can find a wife who will be true. What is the opera called?
4. What royal naval rank comes between a Lieutenant Commander and Captain?
5. Which is considered to be the heaviest and largest squid found in the sea? (a) giant squid (b) colossal squid (c) goliath squid (d) leviathan squid
6. Which explorer, captain, privateer and politician circumnavigated the world and claimed a portion of California for Queen Elizabeth 1?
7. Which eighteenth century English pirate captain operating in the Bahamas and Cuba along with the female pirates Mary Read and Anne Bonny is credited with designing the Jolly Roger flag – the skull and crossed swords/bones on a black background?
8. Who single-handedly sailed his boat *Lively Lady* across the Atlantic in 1964 and then circumnavigated the globe in 1967-68 and was knighted in recognition of his feats of skill and endurance?
9. Isambard Kingdom Brunel's passenger steamship was the first iron steamer to cross the Atlantic in 1845. What was the ship called, and where is she now?
10. Who volunteered to lead the British Antarctic Research Mission and sailed on board RRS Discovery?

And so, goodbye:

We send you our regards, as always, and hope that you are well.

If you have anything to add to the story of Rheindahlen, or memories of the places you have been, we would love to hear from you. It is through members sending in their stories that we can keep going!

Next month, there will hopefully be some pictures and news of the Lunch and AGM, but small, snappy items are so welcome.

Anyone fancy writing the next quiz, or sharing recipes, or poems? It would be lovely to have something new and/or different to share.

Best wishes

Hugh and Christine Ritchie
Membership Secretaries
